

gesänge des tages und der nacht

songs of the day and night

gesang III

klavier

song III

piano

eva-maria houben

2016

gesänge des tages und der nacht

songs of the day and night

gesang III

klavier

song III

piano

eva-maria houben

2016

für anastassis philippakopoulos.

for anastassis philippakopoulos.

dies ist eine sammlung.

es können einige seiten ausgewählt und in freier reihenfolge gespielt werden.

jede melodie auf einer seite zweimal spielen: einmal so, wie sie notiert ist; ein zweites mal bei freier oktavlage eines jeden tones.

vorzeichen gelten nur ein einziges mal jeweils vor der betreffenden note.

die harmonik kann vom spieler frei hervorgehoben werden, indem er einzelne töne durch liegen bleibende tasten oder durch die freie nutzung des rechten pedals aneinander bindet. so können klänge einander frei überlappen – oder auch (beim spielen der melodie ohne überbindung) nicht.

insgesamt zart und poetisch.

this is a collection.

you may choose single pages and play them in free order.

play each melody on each page twice: at first as it is notated; then with free octave on each tone.

accidentals count once: in any case immediately before the note concerned.

the player can freely bring out the harmonics binding together single notes by keys which are kept down or by free right pedal.

in this way sounds may overlap – or not (in case the player plays the melody without binding single tones).

on the whole tender and poetic.

.....

.....

.....

.....

Handwritten musical notation on a single staff. It begins with a treble clef and a key signature of one flat (Bb). The notes are: Bb (quarter), Bb (quarter), D (quarter), E (quarter), F (quarter), G (quarter), Ab (quarter), Ab (quarter), Bb (quarter), Bb (quarter). Above the notes are slurs and accents: a slur over the first two notes with an accent, a slur over the next two notes with an accent, a slur over the next two notes with an accent, a slur over the next two notes with an accent, and a slur over the final two notes with an accent. A sharp sign (#) is written below the D note.

Handwritten musical notation on a single staff. It begins with a treble clef and a key signature of one flat (Bb). The notes are: D (quarter), E (quarter), F (quarter), G (quarter), Ab (quarter), Ab (quarter), Bb (quarter), Bb (quarter), D (quarter). Above the notes are slurs and accents: a slur over the first two notes with an accent, a slur over the next two notes with an accent, a slur over the next two notes with an accent, and a slur over the final note with an accent.

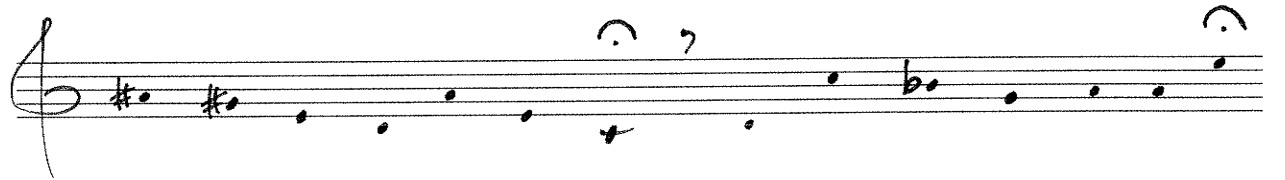
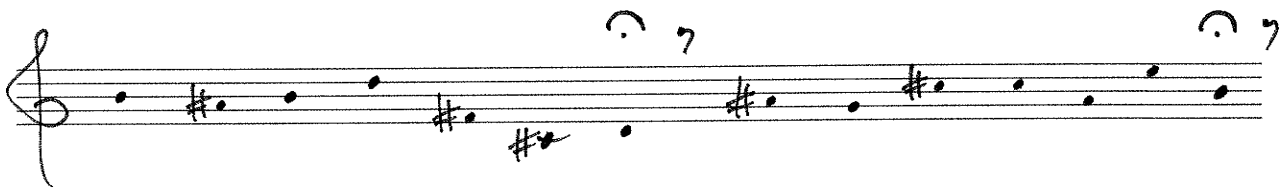
.....

.....

.....

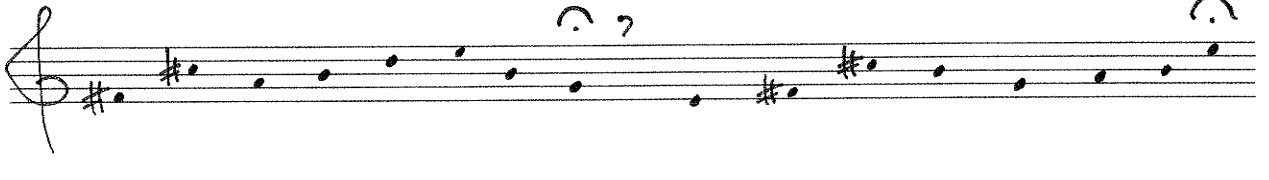
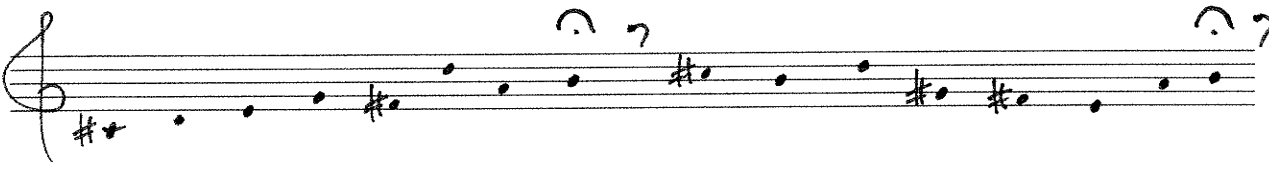
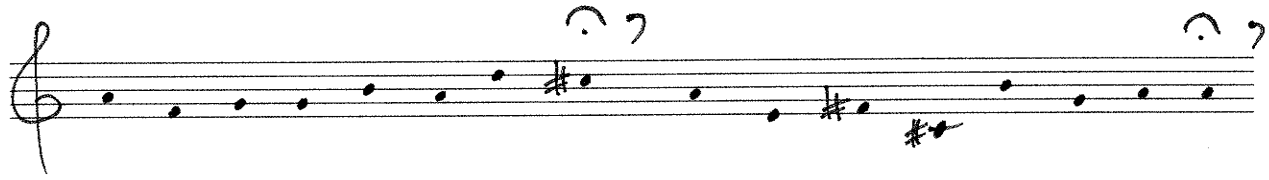
.....

.....

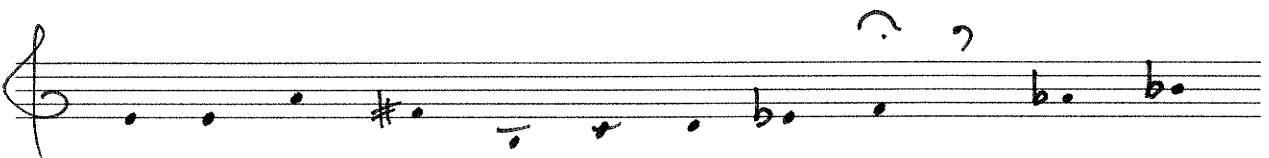


.....

.....
.....
.....
.....



.....
.....
.....
.....

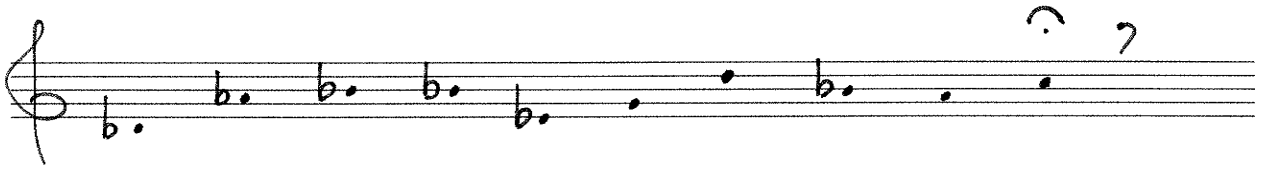


.....

.....

.....

.....



.....

.....

.....

.....

.....

♯ 𝄌

♭

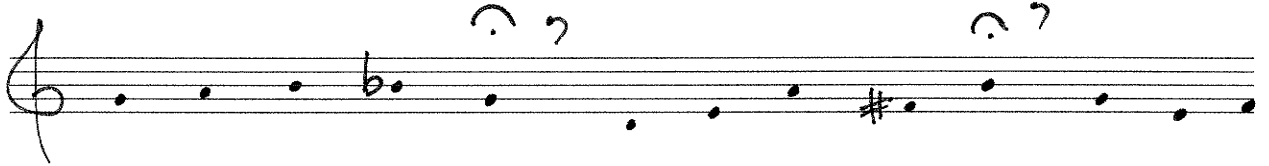
.....

.....

.....

.....

.....



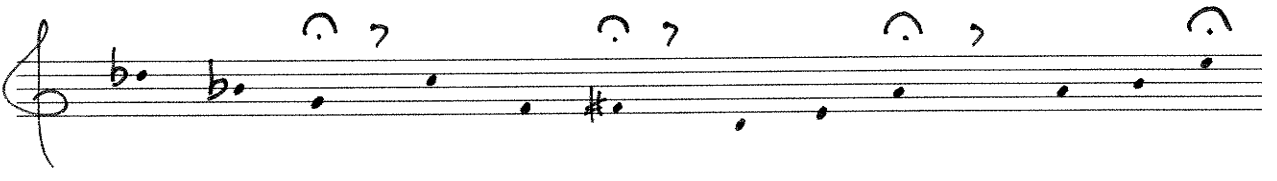
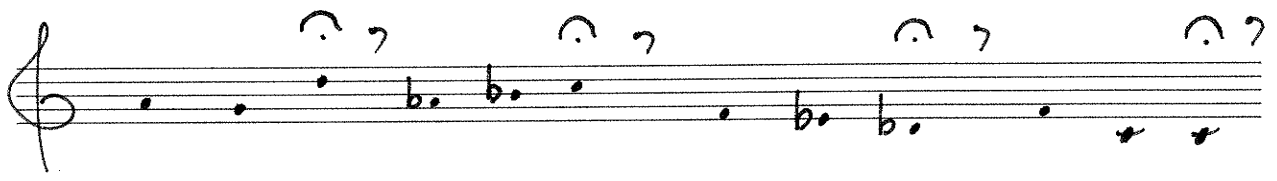
.....

.....

.....

.....

.....



.....

.....

.....

.....

.....

A single staff of music with a treble clef. The key signature has one sharp (F#). The notes are: F#4, G4, A4, B4, C5, B4, A4, G4, F#4, E4, D4, C4. There are two slurs with question marks above the notes: one over C5, B4, A4, G4 and another over F#4, E4, D4, C4.

A single staff of music with a treble clef. The key signature has one sharp (F#). The notes are: F#4, G4, A4, B4, C5, B4, A4, G4, F#4, E4, D4, C4. There are three slurs with question marks above the notes: one over C5, B4, A4, G4; one over F#4, E4, D4, C4; and one over F#4, G4.

.....