

**twelve small preludes
for guitar
zwölf kleine präludien
für gitarre**


eva-maria houben



2014


twelve small preludes
for guitar
zwölf kleine präludien
für gitarre


eva-maria houben
2014

for cristián alvear, barry chabala and david zeich.

 : (eher langsames) arpeggio.


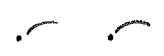
 : kurze phrasen (töne / intervale / akkorde), tempo etwa 54 –
 60 MM.


 : einzelton – ein wenig verweilen.


 : pause – ein wenig verweilen.

insgesamt zart und luftig.

 : (rather slow) arpeggio.

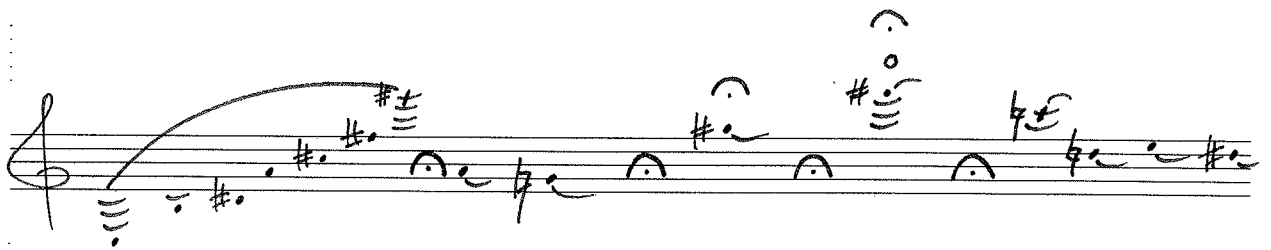
 : short phrases (sounds / intervals / chords), tempo about 54 –
 60 MM.

 : single sound – stay for a while.

 : pause – stay for a while.

on the whole tender and airy.

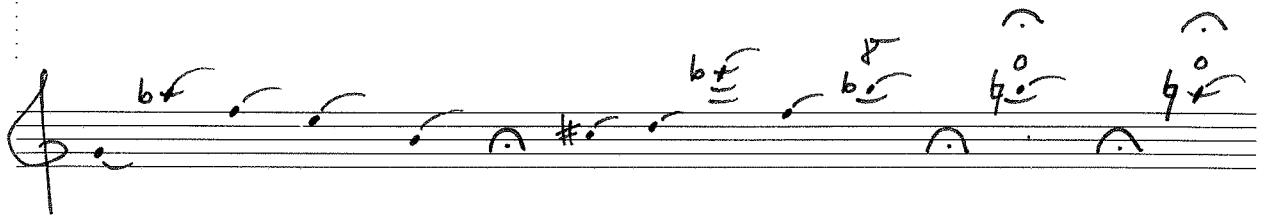
I



II

Handwritten musical notation on two staves. The notation includes notes, rests, and various accidentals (sharps, flats, naturals). The first staff begins with a treble clef and contains a series of notes with accidentals, including a long slur over several notes. The second staff also begins with a treble clef and contains notes with accidentals, including some with stems pointing downwards. There are also some vertical markings resembling chord diagrams or fingerings above and below the notes.

III



IV

The image shows two staves of handwritten musical notation. The top staff begins with a treble clef and a key signature of two sharps (F# and C#). The first four notes are beamed together and marked with a slur. The notes are: F# (quarter), C# (quarter), G# (quarter), and E (quarter). This is followed by two chords: a G# major triad (G#, B, D) and an F# major triad (F#, A, C). The bottom staff begins with a treble clef and a key signature of one flat (Bb). The first two notes are beamed together and marked with a slur. The notes are: Bb (quarter) and G (quarter). This is followed by a chord: a Bb major triad (Bb, D, F). The next two notes are beamed together and marked with a slur. The notes are: Bb (quarter) and G (quarter). This is followed by three chords: a Bb major triad (Bb, D, F), a Bb major triad (Bb, D, F), and a Bb major triad (Bb, D, F).

V

A handwritten musical staff on a five-line system. The staff begins with a treble clef and a key signature of one flat (B-flat). The notation includes several notes with various accidentals and annotations:

- First measure: A B-flat note with a fermata above it.
- Second measure: A B-flat note with a fermata above it.
- Third measure: A B-flat note with a fermata above it. Above the staff, there is a circled '8' with a plus sign and a minus sign, and a circled '0' with a plus sign and a minus sign.
- Fourth measure: A B-flat note with a fermata above it.
- Fifth measure: A B-flat note with a fermata above it.
- Sixth measure: A B-flat note with a fermata above it. A slur connects this note to the seventh measure.
- Seventh measure: A B-flat note with a fermata above it. Above the staff, there is a circled '8' with a plus sign and a minus sign, and a circled '0' with a plus sign and a minus sign.
- Eighth measure: A B-flat note with a fermata above it.

VI

The image shows two staves of handwritten musical notation. The top staff is a treble clef staff with a melodic line. It begins with a quarter note, followed by a half note with a flat, then another half note with a flat. This is followed by a quarter rest, then a half note with a flat, a quarter rest, a half note with a flat, a quarter rest, and finally a half note with a flat. Above the staff, there are some additional markings, including a small circle and a vertical line. The bottom staff is also a treble clef staff, but it appears to be a bass line. It starts with a quarter note, followed by a half note with a flat, then a quarter rest. This is followed by a half note with a flat, a quarter rest, a half note with a flat, a quarter rest, a half note with a flat, a quarter rest, and finally a half note with a flat. There are some additional markings above the staff, including a small circle and a vertical line.

VII



VIII

Handwritten musical notation on two staves. The top staff begins with a treble clef and contains a sequence of notes: a quarter note, two eighth notes, a quarter note with a flat, a half note, and another half note. A slur covers the final three notes, which are followed by a double bar line. Above the staff, there are several handwritten annotations: a vertical line with three horizontal dashes, a circled note with a flat, and a circled note with a sharp. The bottom staff also begins with a treble clef and contains a sequence of notes: a half note, a quarter note, a half note, a quarter note, a half note with a flat, and a quarter note with a flat. Above the staff, there are several handwritten annotations: a circled note with a flat, a circled note with a sharp, a circled note with a flat, a circled note with a sharp, and a circled note with a flat. Below the staff, there is a circled note with a flat.

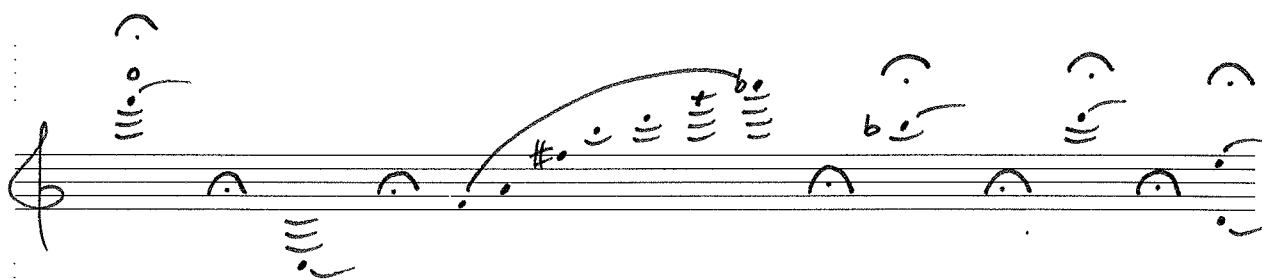
IX

Handwritten musical notation on a single staff. The notation includes a treble clef, a series of notes with stems and beams, and various accidentals (sharps, flats, naturals). Annotations above the staff include the letters 'E', 'b', '4', and 'x' with arrows pointing to specific notes. There are also some circled notes and other markings.

X

Handwritten musical notation on two staves. The top staff begins with a treble clef and contains a sequence of notes: a sharp sign followed by a dot, another sharp sign followed by a dot, a note with a slur, a note with a sharp sign and a dot, a note with a sharp sign and a dot, a note with a sharp sign and a dot, a note with a sharp sign and a dot, and a note with a sharp sign and a dot. The bottom staff begins with a treble clef and contains a sequence of notes: a flat sign followed by a dot, a sharp sign followed by a dot, a note with a sharp sign and a dot, a note with a sharp sign and a dot, a note with a sharp sign and a dot, a note with a sharp sign and a dot, a note with a sharp sign and a dot, a note with a sharp sign and a dot, and a note with a sharp sign and a dot. Both staves feature various musical symbols such as slurs, accents, and dynamic markings.

XI



XII

Handwritten musical notation on two staves. The notation is written in black ink on a white background. The top staff begins with a treble clef and contains several notes with stems, some marked with a sharp (#) and others with a flat (b). The bottom staff also begins with a treble clef and contains notes with stems, some marked with a sharp (#) and others with a flat (b). The notation is somewhat sketchy and appears to be a draft or a study piece.