

litanies
für gitarre und klavier
for guitar and piano

eva-maria houben

2005

litanies

für gitarre und klavier

for guitar and piano

eva-maria houben

2005

für michael.

for michael.

jedem klang nachhören, bis er verschwunden ist.
dann den nächsten anschließen.

✓ : atemzäsur. eine zeitlang innehalten und verweilen.

alle klänge sind leise.

jeder spieler ist solist, spielt für sich.
einer fängt irgendwann an zu spielen.
der andere setzt so ein, dass die spuren der beiden sich eine ganze
zeitlang überschneiden.

seiten auswählen und in freier reihenfolge spielen.

listen to each sound until the decay.

then play the next one.

✓ : a short break to breath. stay for a while.

all sounds are soft.

each player plays as soloist: play for yourself.

one player begins to play anytime.

the other player enters in such a way, that the lines of both players overlap for rather a long time.

choose some pages and play in free order.

gitarre

Handwritten musical notation for guitar, first staff. It features a treble clef and a common time signature (C). The notation includes a sharp sign (#) followed by a double bar line, a single eighth note, and a final eighth note with a checkmark above it.

Handwritten musical notation for guitar, second staff. It features a treble clef and a common time signature (C). The notation includes a single eighth note, a double bar line, a double eighth note, a double eighth note with a sharp sign (#), and a final eighth note with a checkmark above it.

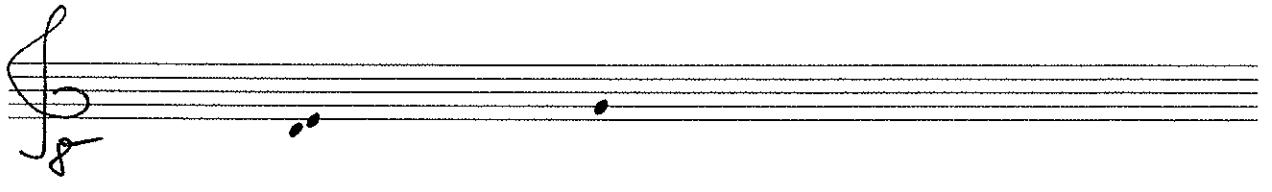
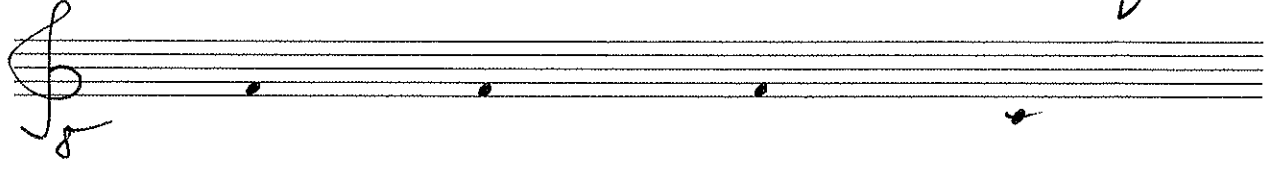
Handwritten musical notation for guitar, third staff. It features a treble clef and a common time signature (C). The notation includes a single eighth note, a double bar line, and another single eighth note.

klavier

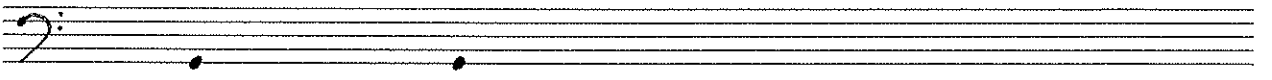
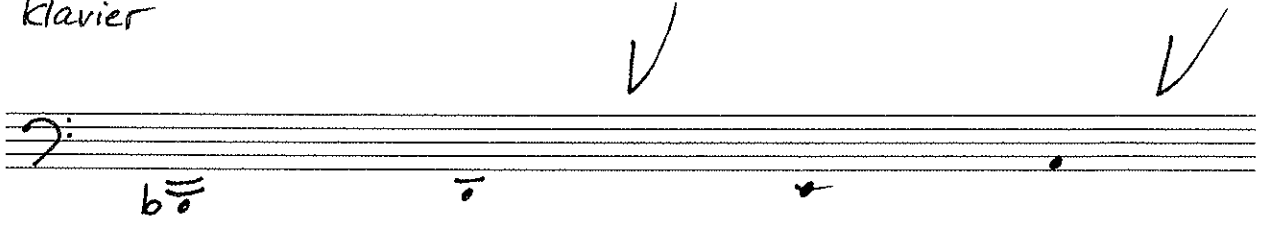
Handwritten musical notation for piano, first staff. It features a treble clef and a common time signature (C). The notation includes a sharp sign (#) followed by a double bar line, a double eighth note with a sharp sign (#), another double eighth note with a sharp sign (#), a double bar line, a single eighth note, and a final double eighth note with a checkmark above it.

Handwritten musical notation for piano, second staff. It features a treble clef and a common time signature (C). The notation includes a double eighth note, a double bar line, a single eighth note, and another single eighth note.

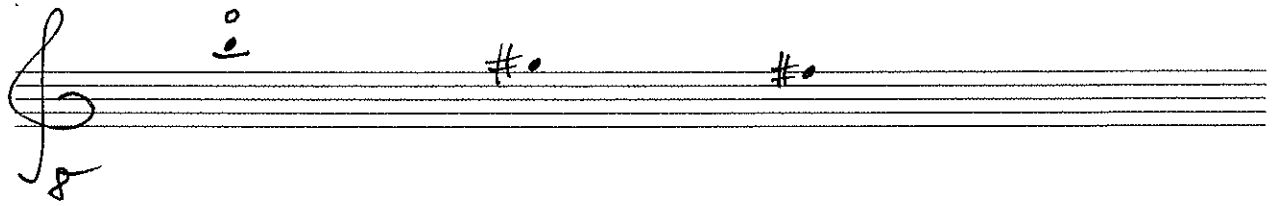
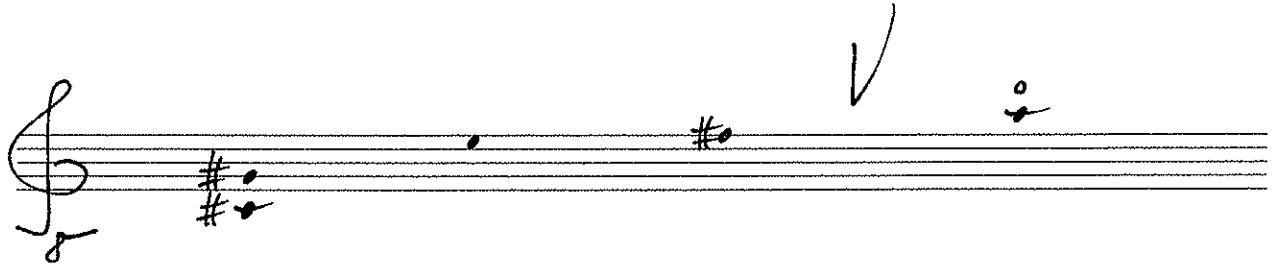
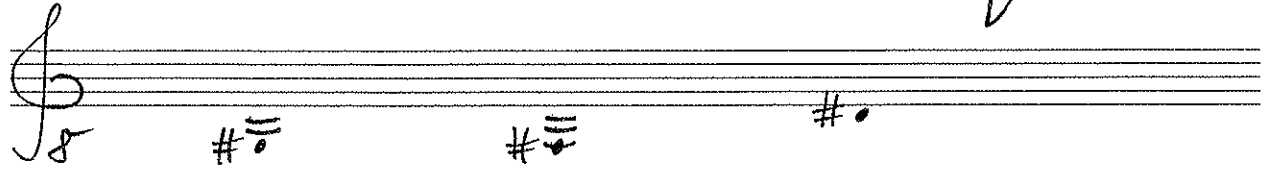
gitarre



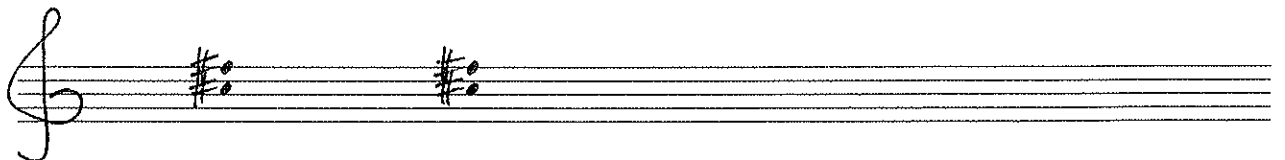
klavier



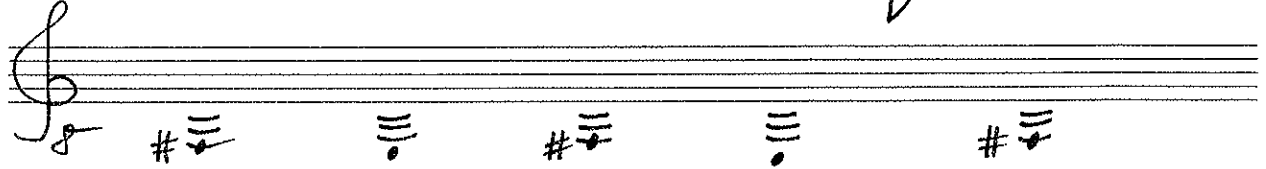
gitarre



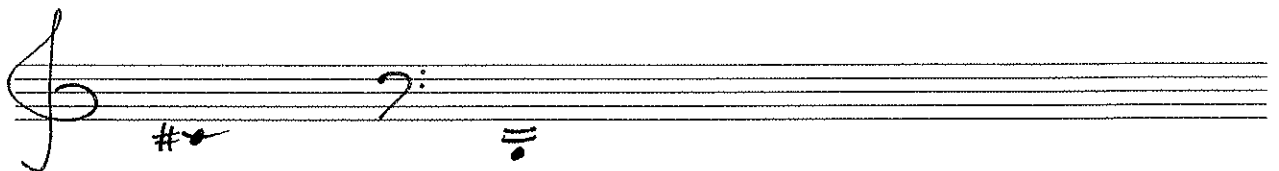
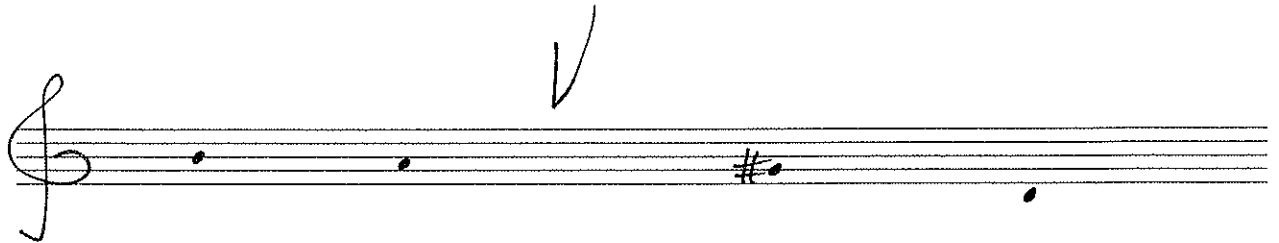
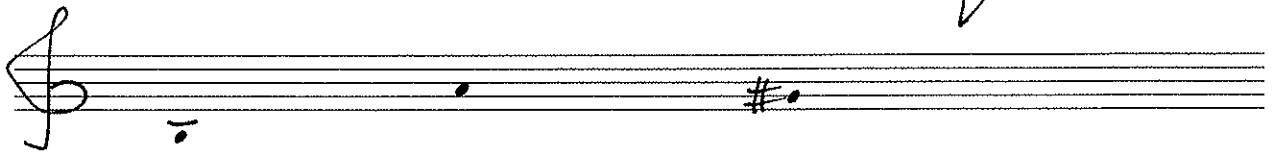
klavier



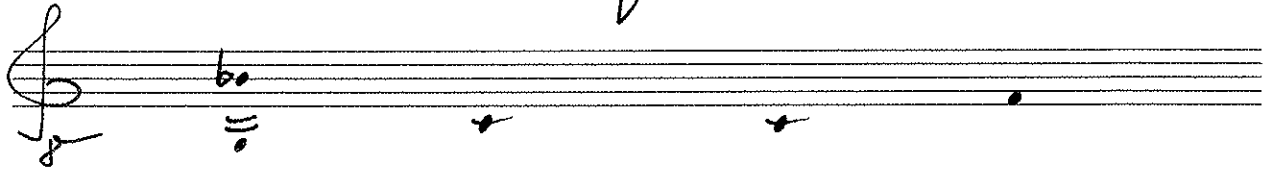
gitarre



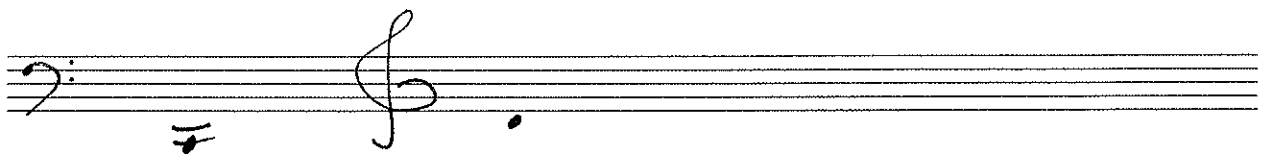
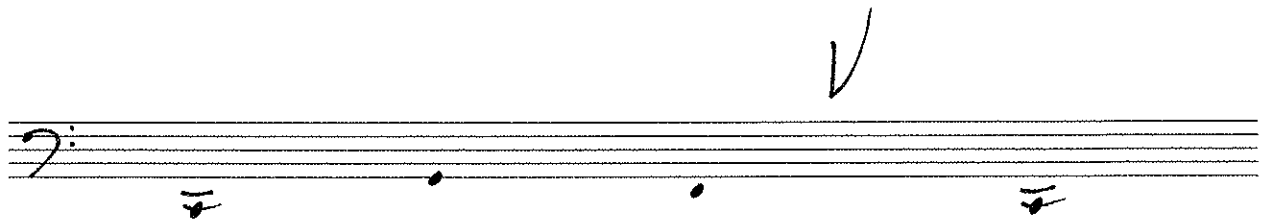
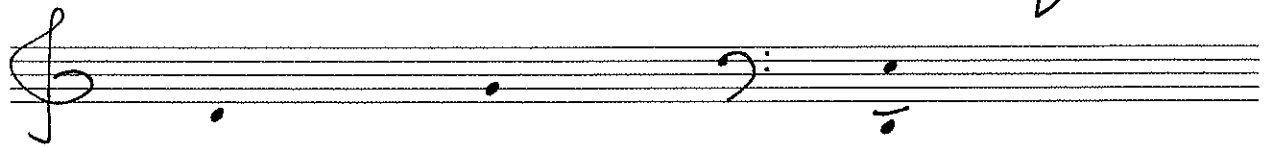
klavier



gitarre



klavier



gitarre

Handwritten musical notation for guitar in treble clef. The staff begins with a treble clef and a common time signature (C). The first measure contains a chord symbol $b\bar{o}$ with a dot above it. The second measure contains a single note on the second line (D4). The third measure contains a single note on the fourth line (F4) with a checkmark above it. The fourth measure contains a single note on the fifth line (G4).

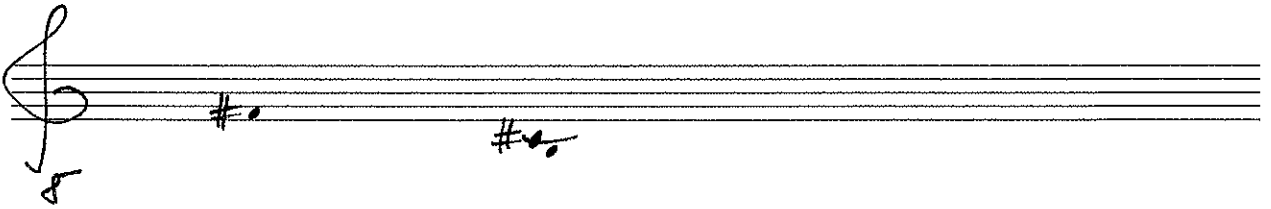
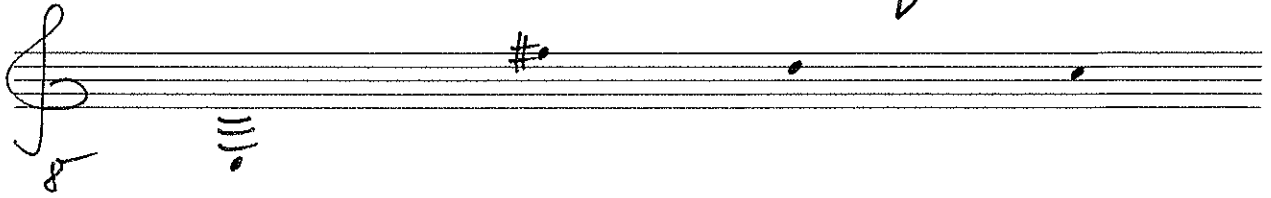
Handwritten musical notation for guitar in treble clef. The staff begins with a treble clef and a common time signature (C). The first measure contains a chord symbol $b\bar{o}$ with a dot above it. The second measure contains a single note on the second line (D4).

klavier

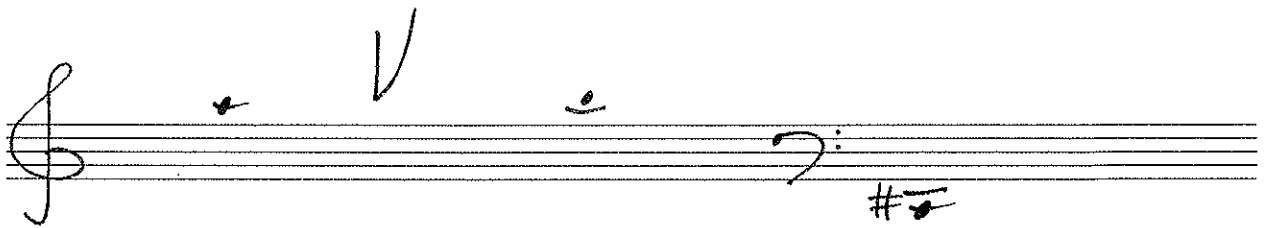
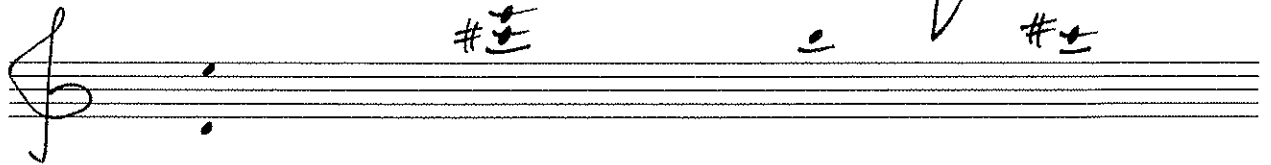
Handwritten musical notation for piano in bass clef. The staff begins with a bass clef and a common time signature (C). The first measure contains a chord symbol $b\bar{o}$ with a checkmark above it. The second measure contains a single note on the second line (D3). The third measure contains a chord symbol \bar{f} with a checkmark above it. The fourth measure contains a chord symbol $b\bar{o}$ with a checkmark above it.

Handwritten musical notation for piano in bass clef. The staff begins with a bass clef and a common time signature (C). The first measure contains a single note on the second line (D3). The second measure contains a single note on the second line (D3).

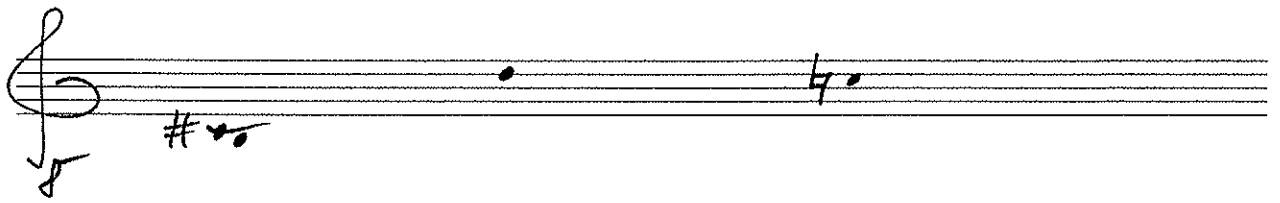
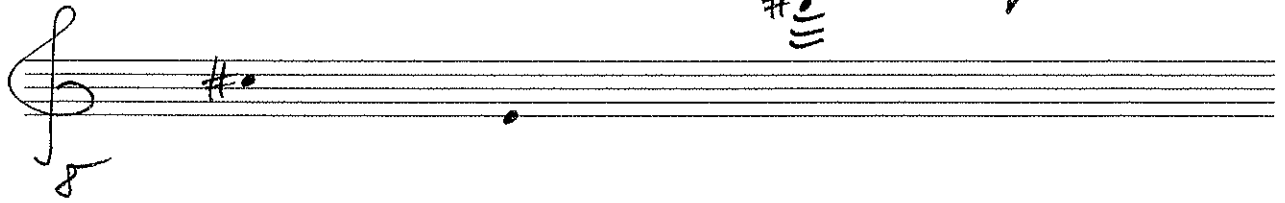
gitarre



Klavier



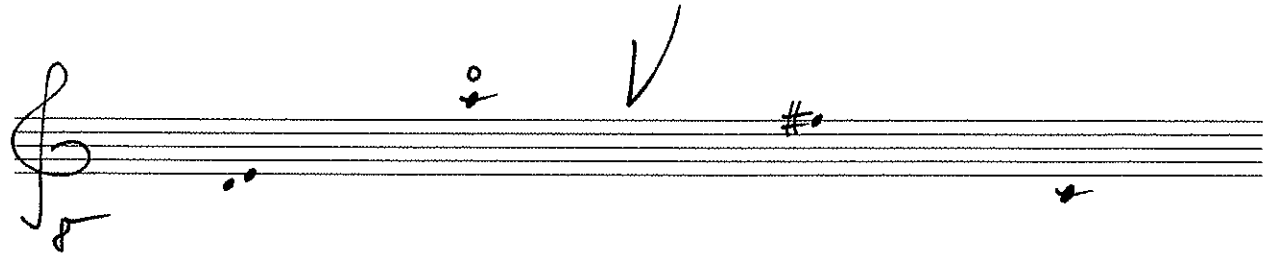
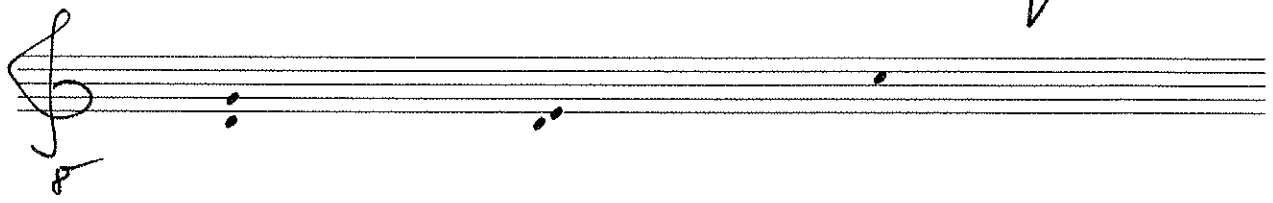
gitarre



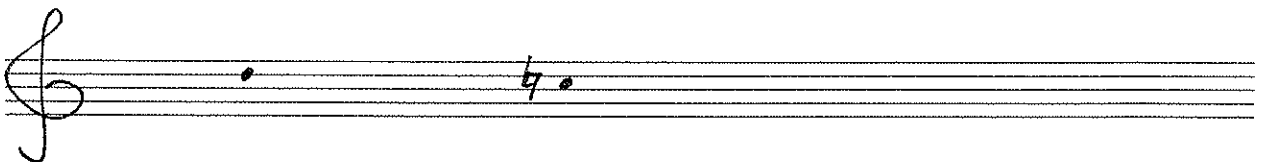
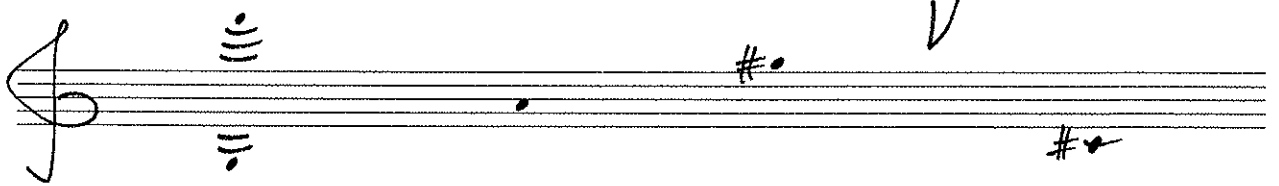
klavier



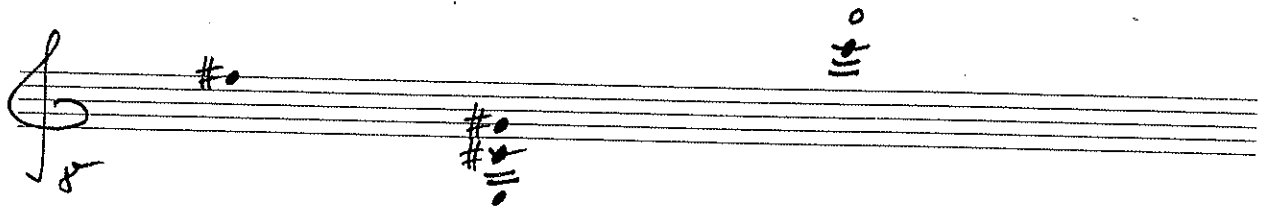
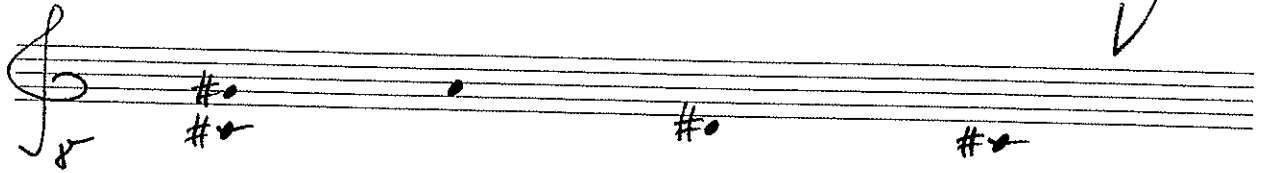
gitarre



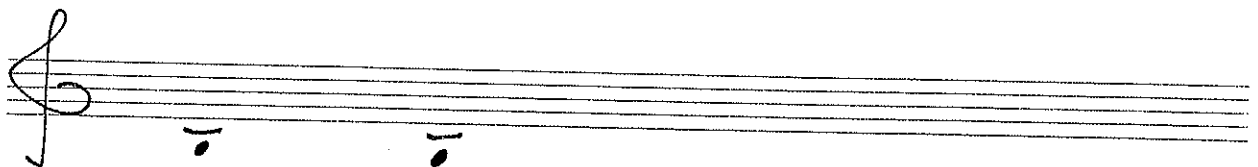
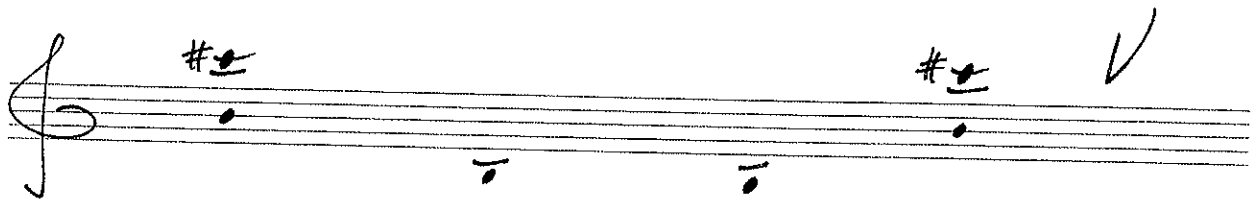
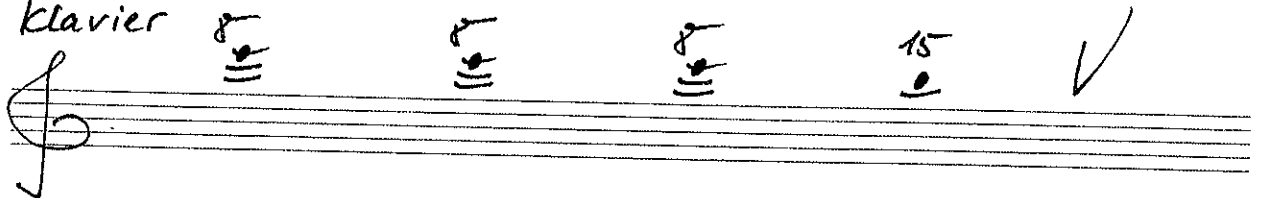
klavier



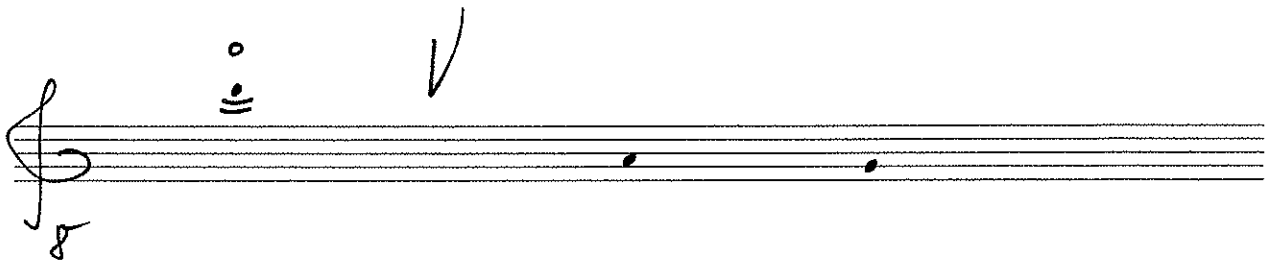
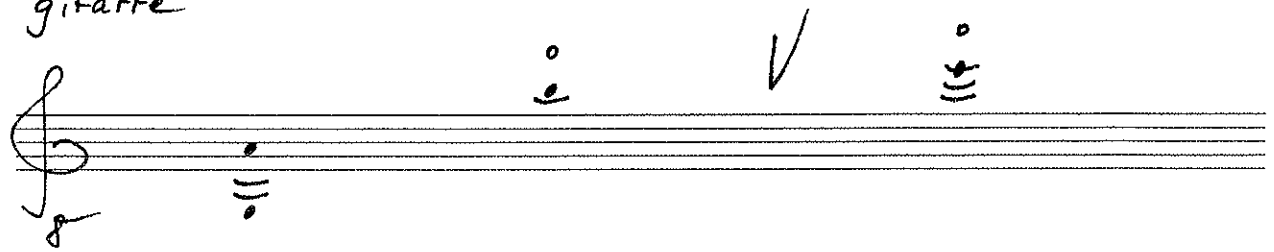
gitarre



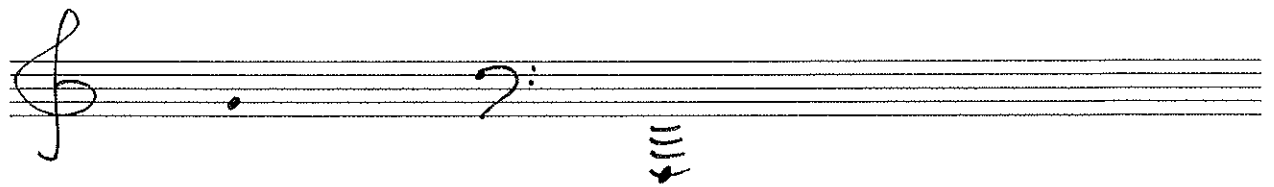
klavier



gitarre



klavier



gitarre

Handwritten musical notation for guitar on a treble clef staff. The notation includes a treble clef, a sharp sign (#) on the first line, a double bar line with a vertical line through it, a note on the second line with a sharp sign, and a checkmark.

Handwritten musical notation for guitar on a treble clef staff. The notation includes a treble clef, a note on the first line, a note on the second line, and a note on the fourth line with a sharp sign.

klavier

Handwritten musical notation for piano on a bass clef staff. The notation includes a bass clef, a double bar line with a vertical line through it, a note on the second line with a double bar line above it, a note on the second line with a double bar line above it, and a note on the second line with a double bar line above it. A checkmark is positioned above the staff.

Handwritten musical notation for piano on a bass clef staff. The notation includes a bass clef, a note on the first line, and a note on the second line with a sharp sign.

gitarre

Handwritten guitar notation on a single staff. It starts with a treble clef and a 5/8 time signature. The notes are: a quarter note on the second line (F), a quarter note on the second space (G), a quarter note on the second space (G), and a dotted half note on the second space (G) with a flat sign (Gb). Above the staff, there are three vertical lines with a circle above them, and a checkmark to the right.

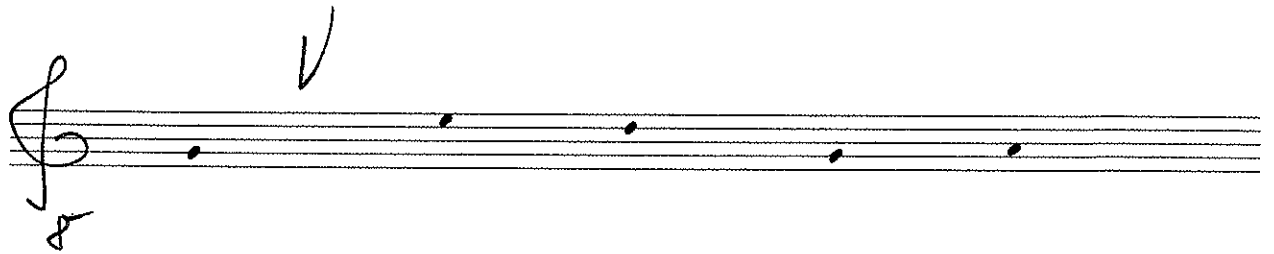
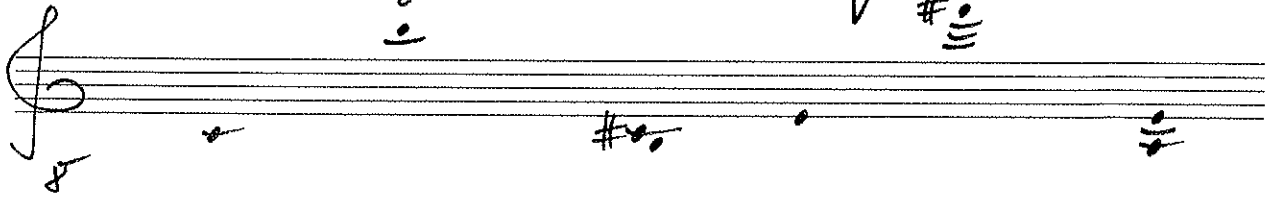
Handwritten guitar notation on a single staff. It starts with a treble clef and a 5/8 time signature. The notes are: a quarter note on the second line (F), a quarter note on the second space (G), a quarter note on the second space (G), a quarter note on the second space (G), a quarter note on the second space (G), a quarter note on the second space (G), and a quarter note on the second space (G). A checkmark is above the first note.

klavier

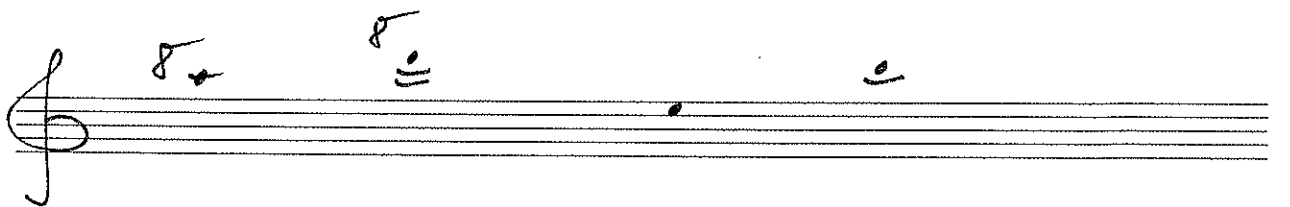
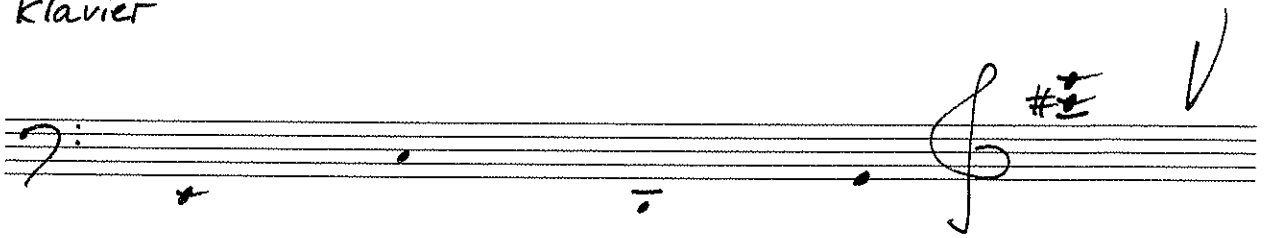
Handwritten piano notation on a single staff. It starts with a bass clef and a 5/8 time signature. The notes are: a quarter note on the first space (F), a quarter note on the first space (F), a quarter note on the first space (F), a half note on the first space (F) with a sharp sign (F#), and a quarter note on the first space (F).

Handwritten piano notation on a single staff. It starts with a treble clef. The notes are: a quarter note on the second space (G) with a sharp sign (G#), a quarter note on the second space (G), a quarter note on the second space (G) with a sharp sign (G#), and a quarter note on the second space (G).

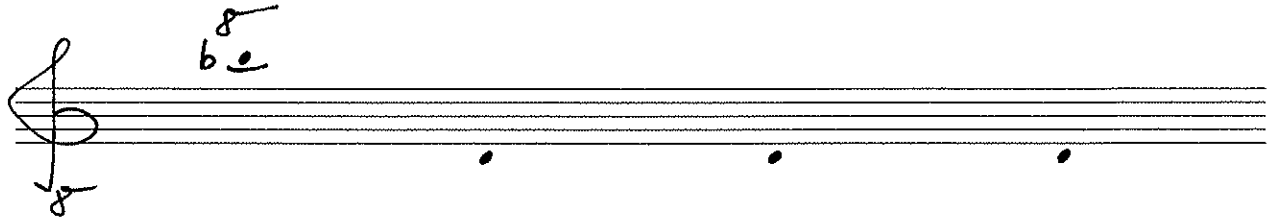
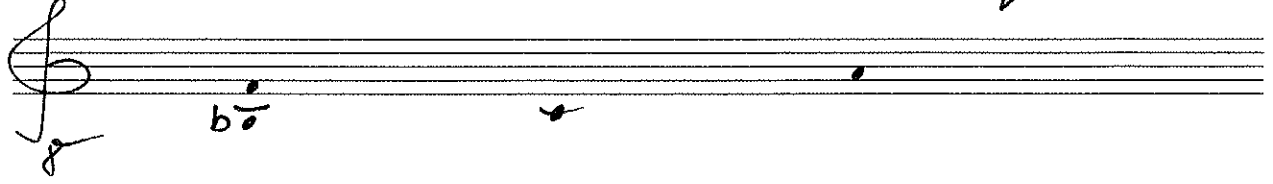
gitarre



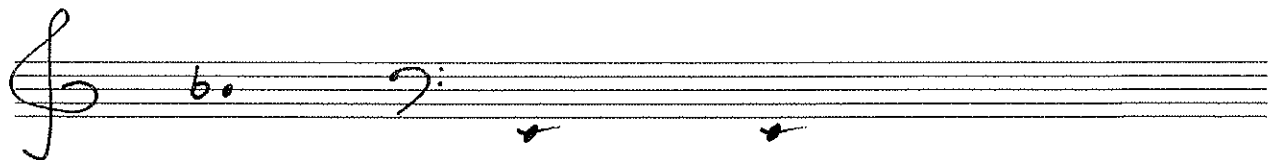
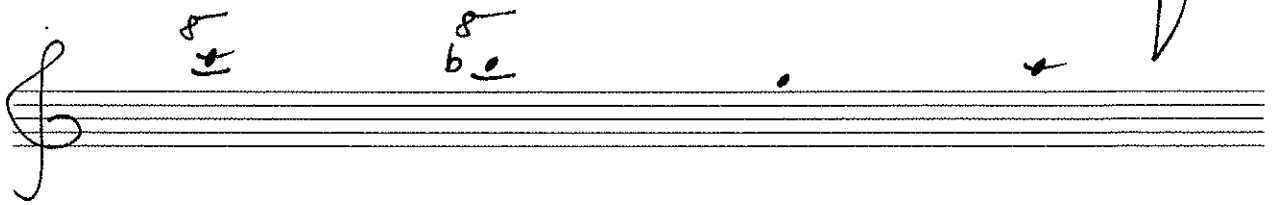
klavier



gitarre



klavier



gitarre

Handwritten musical notation for guitar, first staff. It features a treble clef and a common time signature (C). The staff contains four quarter notes on the G4 line, with a handwritten checkmark above the fourth note.

Handwritten musical notation for guitar, second staff. It features a treble clef and a common time signature (C). The staff contains a quarter note on G4, followed by two chords (G4 and A4) indicated by three horizontal lines with a dot below, and a final quarter note on G4. A handwritten checkmark is above the second measure.

Handwritten musical notation for guitar, third staff. It features a treble clef and a common time signature (C). The staff contains four quarter notes on the G4 line.

klavier

Handwritten musical notation for piano, first staff. It features a bass clef and a common time signature (C). The staff contains two chords (G4 and A4) indicated by three horizontal lines with a dot below, followed by two quarter notes on G4. A handwritten checkmark is above the second measure.

Handwritten musical notation for piano, second staff. It features a bass clef and a common time signature (C). The staff contains three chords (G4, A4, and B4) indicated by three horizontal lines with a dot below.

gitarre

Handwritten musical notation for guitar on a single staff. The staff begins with a treble clef and a common time signature (C). The notation includes two chords, each consisting of a sharp sign (#) above a dotted note and three horizontal lines below it. The first chord is positioned above the first line, and the second is above the second line. Further to the right, there is a single dotted note on the fourth line, followed by a large checkmark symbol (✓).

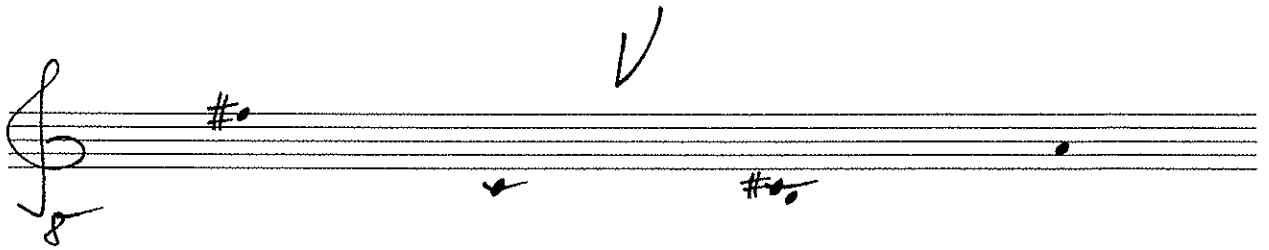
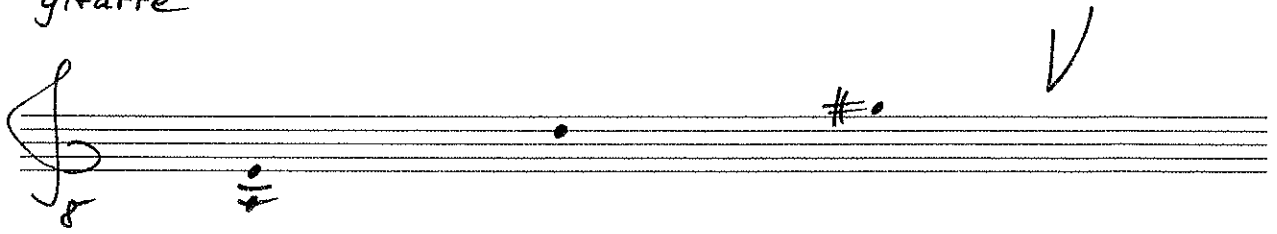
Handwritten musical notation for guitar on a single staff. The staff begins with a treble clef and a common time signature (C). The notation includes two chords, each consisting of a sharp sign (#) above a dotted note and three horizontal lines below it. The first chord is positioned above the first line, and the second is above the second line. Further to the right, there are two single dotted notes on the fourth and fifth lines.

klavier

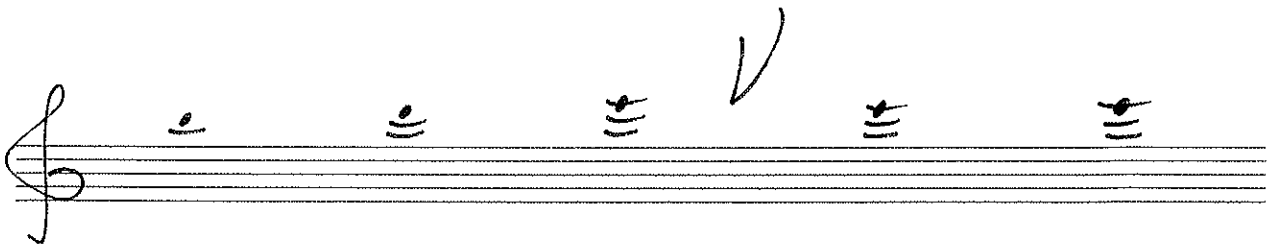
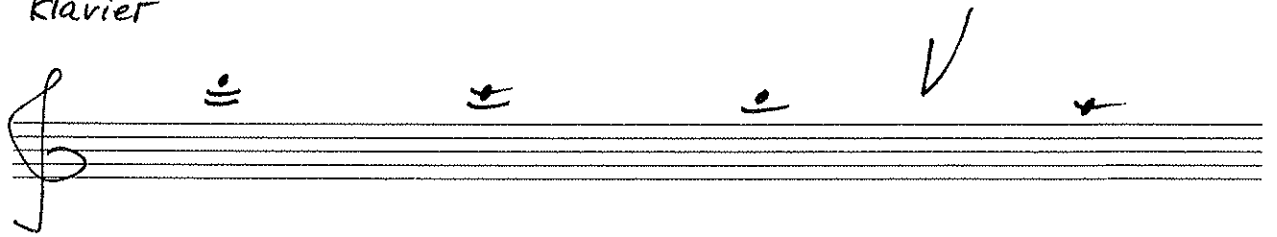
Handwritten musical notation for piano on a single staff. The staff begins with a treble clef and a common time signature (C). The notation includes four chords, each consisting of a sharp sign (#) above a dotted note and two horizontal lines below it. The chords are positioned above the first, second, third, and fourth lines. A large checkmark symbol (✓) is located at the end of the staff.

Handwritten musical notation for piano on a single staff. The staff begins with a treble clef and a common time signature (C). The notation includes two chords, each consisting of a sharp sign (#) above a dotted note and two horizontal lines below it. The chords are positioned above the first and second lines.

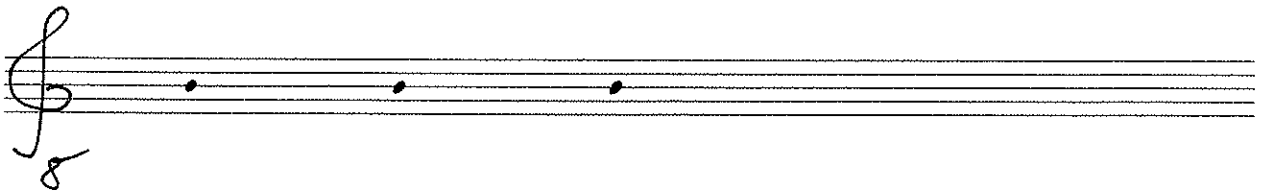
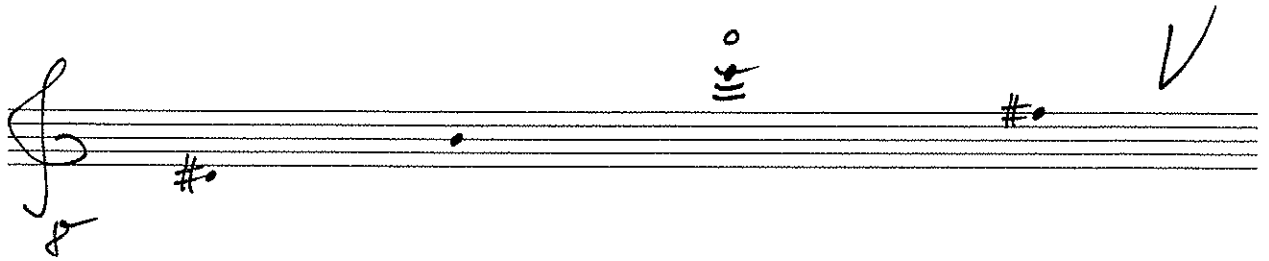
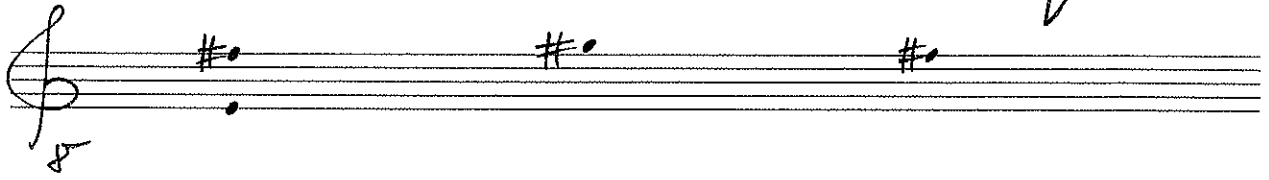
gitarre



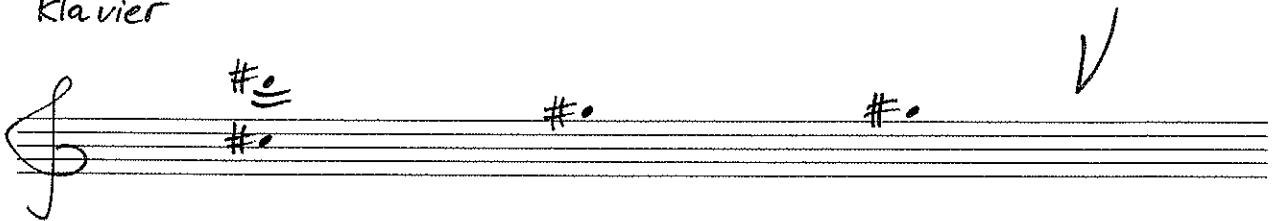
klavier



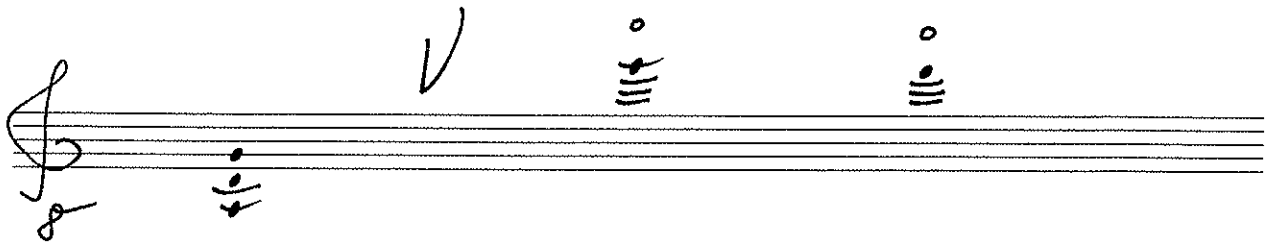
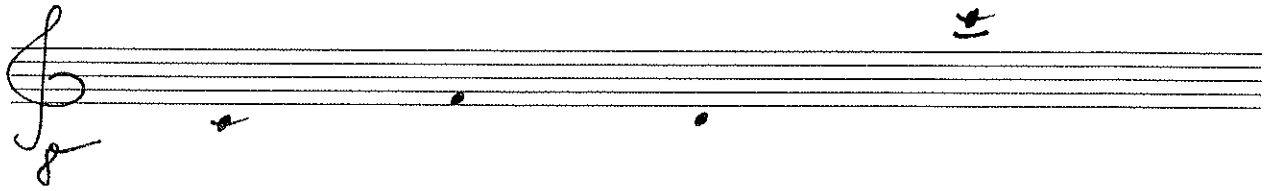
gitarre



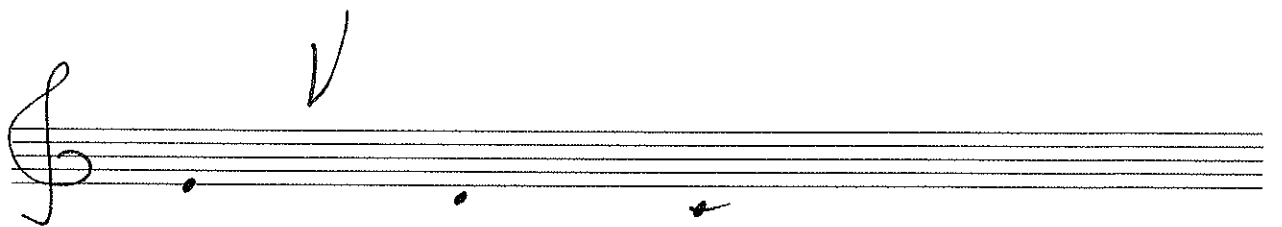
klavier



gitarre



Klavier



gitarre

Handwritten musical notation for guitar on a single staff. It starts with a treble clef and a common time signature. The notes are: a quarter rest, a quarter note on G4, a quarter note on A4, a quarter note on B4, and a quarter note on C5. A checkmark is above the C5 note.

Handwritten musical notation on a single staff. It starts with a treble clef and a common time signature. The notes are: a quarter rest, a quarter note on G4, a quarter note on A4, and a quarter note on B4.

klavier

Handwritten musical notation for piano on a single staff. It starts with a treble clef and a common time signature. The notes are: a quarter rest, a quarter note on G4, a quarter note on A4, a quarter note on B4, and a quarter note on C5. A checkmark is above the C5 note.

Handwritten musical notation on a single staff. It starts with a treble clef and a common time signature. The notes are: a quarter rest, a quarter note on G4, a quarter note on A4, a quarter note on B4, and a quarter note on C5. A checkmark is above the C5 note.

gitarre

Handwritten musical notation for guitar on a treble clef staff. It features a treble clef, a common time signature 'C', and a downward-pointing arrow. The staff contains three dotted quarter notes: the first is on the second line (D4), the second is on the second space (E4), and the third is on the second line (D4). A checkmark is written above the second note.

Handwritten musical notation for guitar on a treble clef staff. It features a treble clef, a common time signature 'C', and a downward-pointing arrow. The staff contains four notes: a dotted quarter note on the second space (E4) with a flat sign, a dotted quarter note on the second space (E4), a dotted quarter note on the second line (D4), and a dotted quarter note on the second space (E4). A checkmark is written above the first note. There are also some scribbles below the staff.

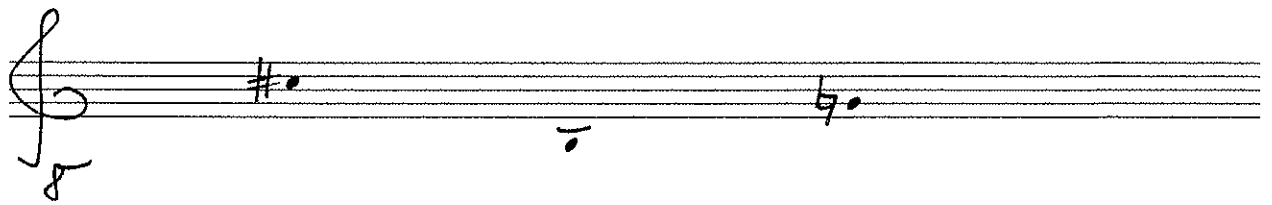
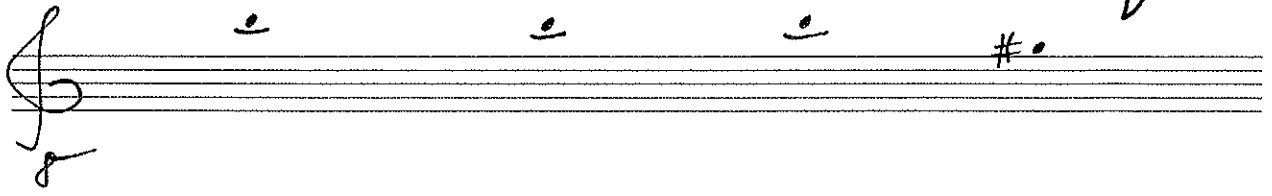
klavier

Handwritten musical notation for piano on a bass clef staff. It features a bass clef, a common time signature 'C', and a downward-pointing arrow. The staff contains four notes: a dotted quarter note on the second space (E3), a dotted quarter note on the second space (E3), a dotted quarter note on the second line (D3), and a dotted quarter note on the second space (E3). A checkmark is written above the last note. There are also some scribbles below the staff.

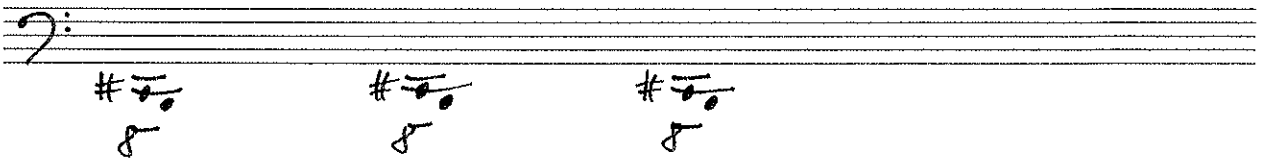
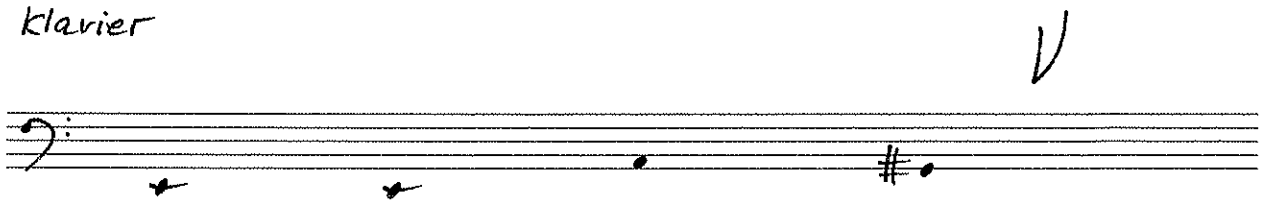
Handwritten musical notation for guitar on a treble clef staff. It features a treble clef, a common time signature 'C', and a downward-pointing arrow. The staff contains four notes: a dotted quarter note on the second space (E4), a dotted quarter note on the second space (E4), a dotted quarter note on the second line (D4), and a dotted quarter note on the second space (E4) with a sharp sign. A checkmark is written above the third note. There are also some scribbles below the staff.

Handwritten musical notation for guitar on a treble clef staff. It features a treble clef, a common time signature 'C', and a sharp sign with a scribble above the first note.

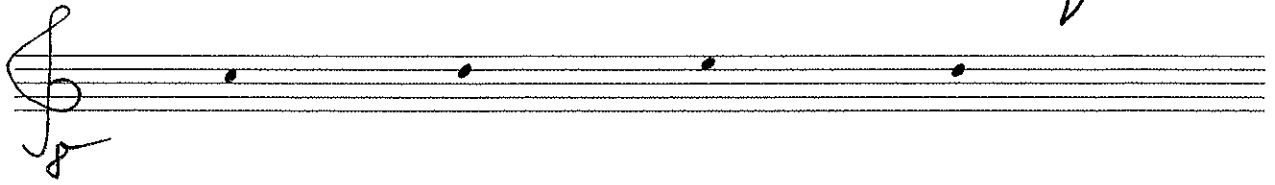
gitarre



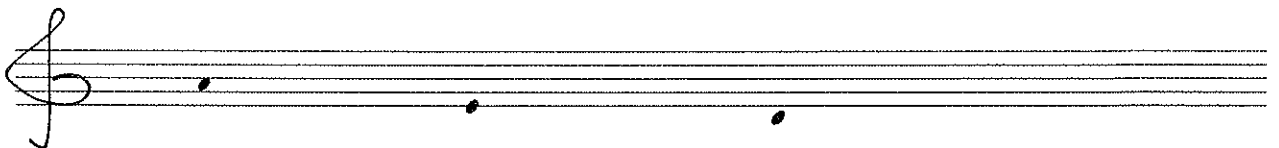
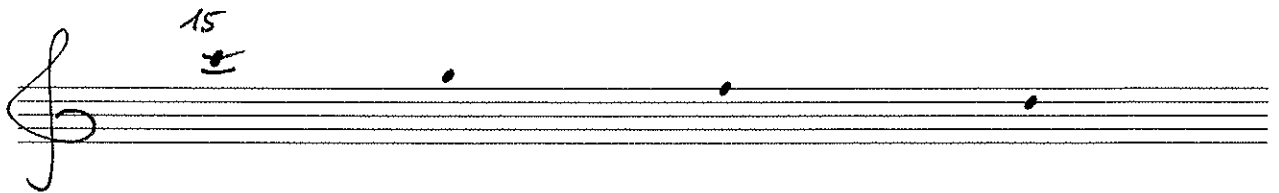
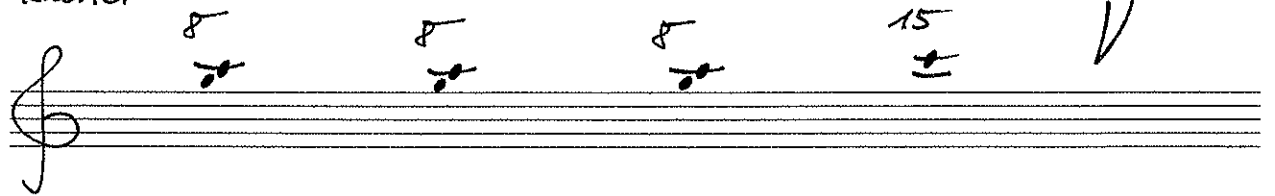
klavier



gitarre



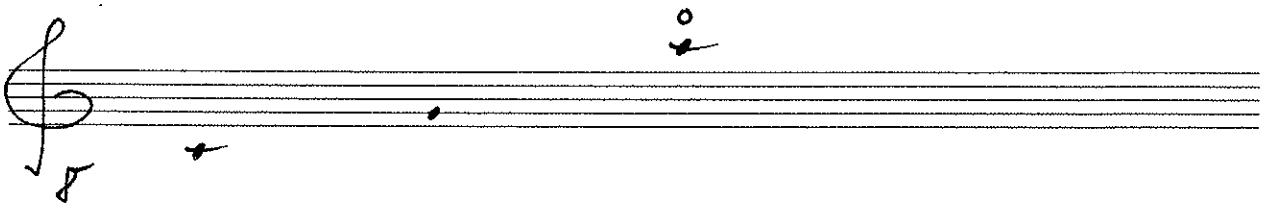
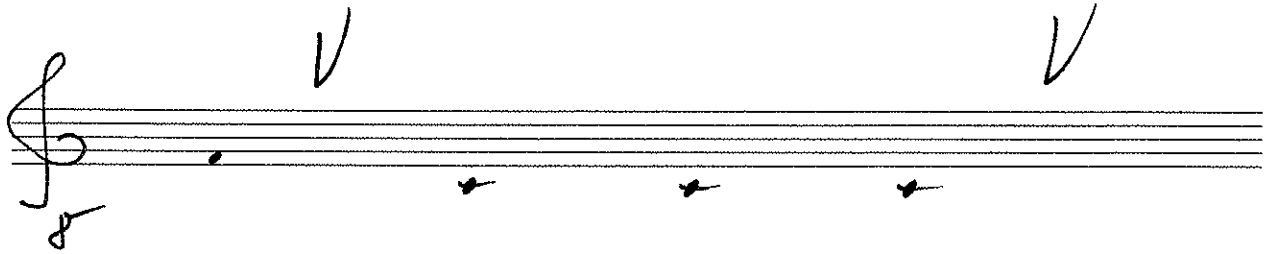
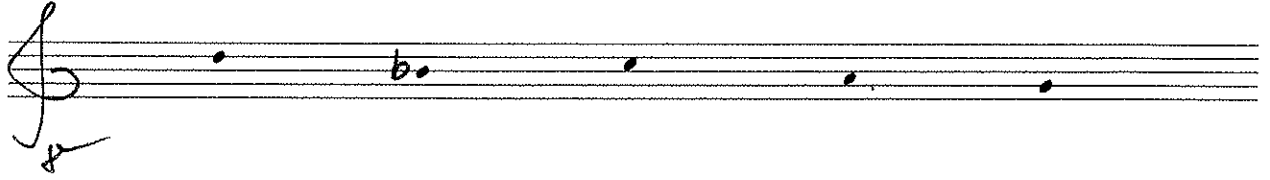
klavier



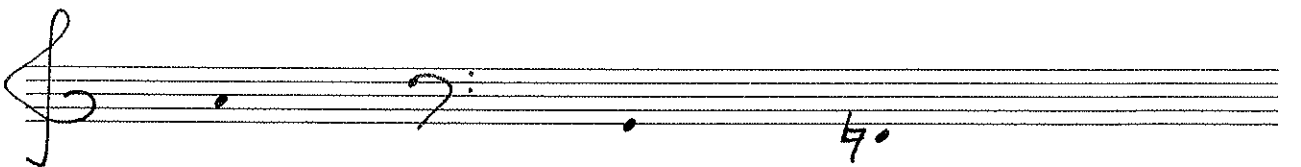
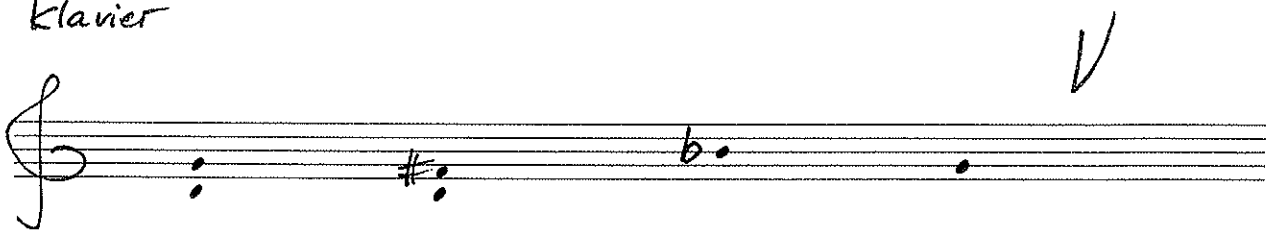
gitarre

klavier

gitarre



Klavier



gitarre

Handwritten guitar notation on a single staff. It begins with a treble clef and a common time signature 'C'. The first measure contains a flat sign 'b' followed by a quarter note on the second line. The second measure contains a whole note chord consisting of three notes on the first, second, and third lines, with a small circle above the notes. The third measure contains a quarter note on the second line. The fourth measure contains a whole note chord consisting of three notes on the first, second, and third lines, with a small circle above the notes. A checkmark is written above the staff between the second and third measures.

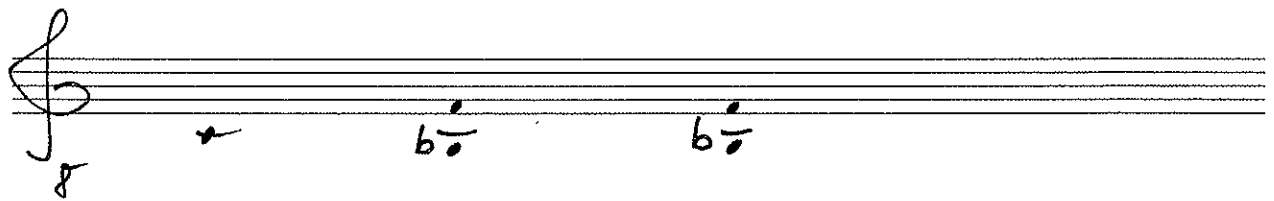
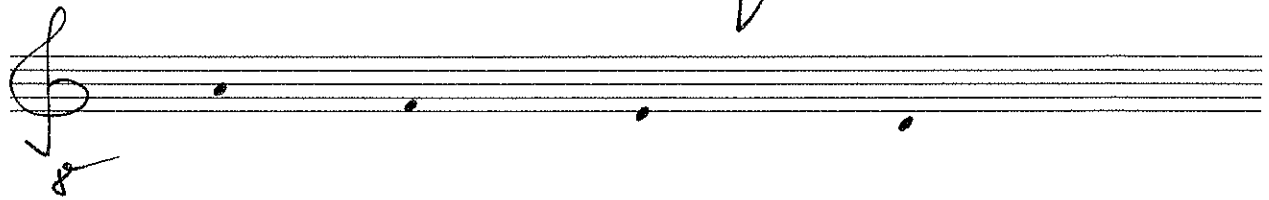
Handwritten guitar notation on a single staff. It begins with a treble clef and a common time signature 'C'. The first measure contains a quarter note on the second line. The second measure contains a quarter note on the second line.

klavier

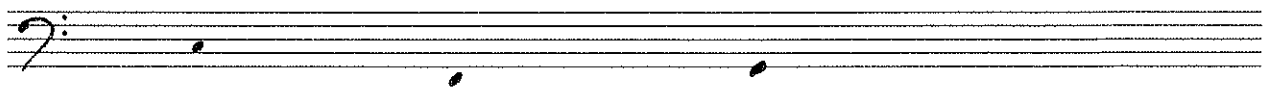
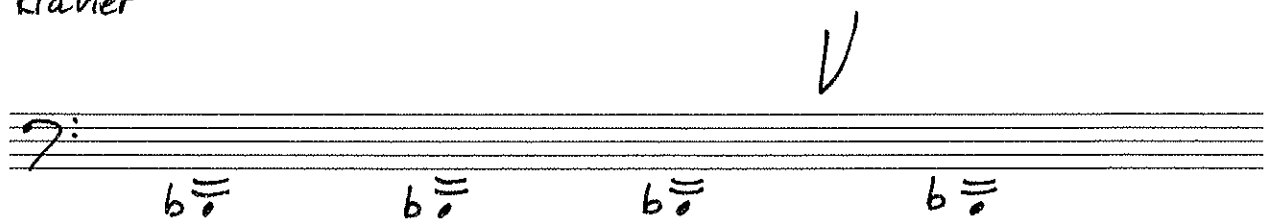
Handwritten piano notation on a single staff. It begins with a bass clef and a common time signature 'C'. The first measure contains a whole note chord consisting of two notes on the first and second lines, with a small circle above the notes. The second measure contains a quarter note on the second line. The third measure contains a treble clef and a quarter note on the second line. The fourth measure contains a whole note chord consisting of two notes on the first and second lines, with a small circle above the notes. A checkmark is written above the staff between the third and fourth measures.

Handwritten piano notation on a single staff. It begins with a treble clef. The first measure contains a whole note chord consisting of three notes on the first, second, and third lines, with a small circle above the notes. The second measure contains a whole note chord consisting of three notes on the first, second, and third lines, with a small circle above the notes.

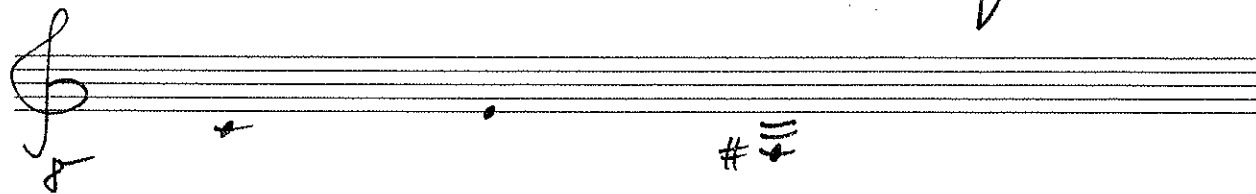
gitarre



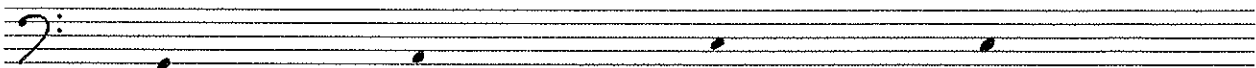
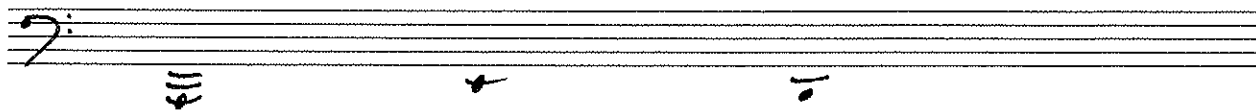
klavier



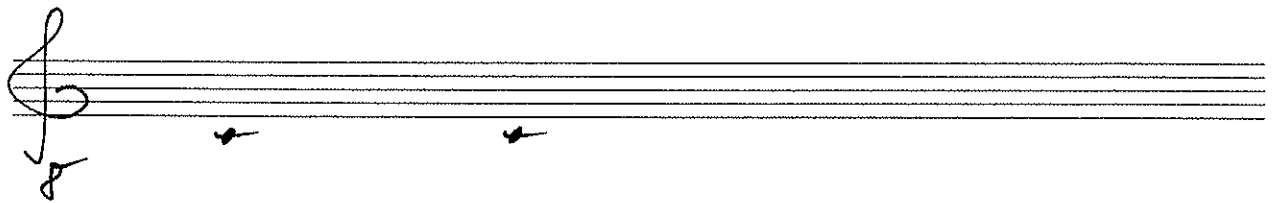
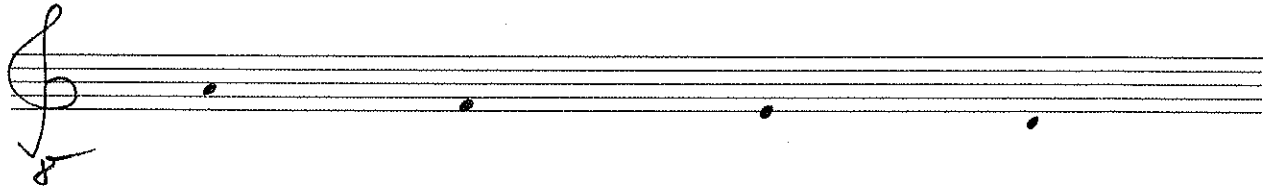
gitarre



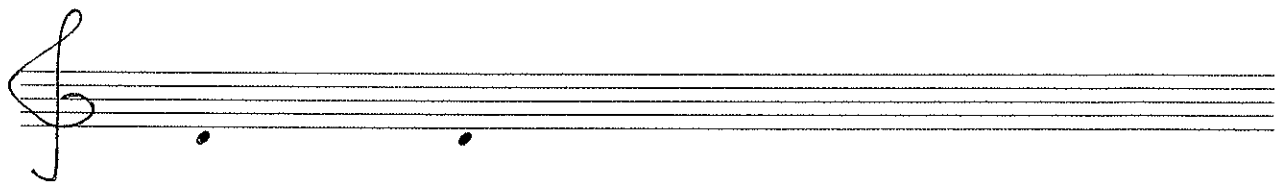
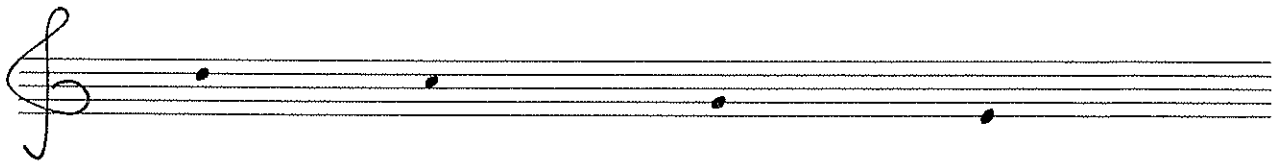
klavier



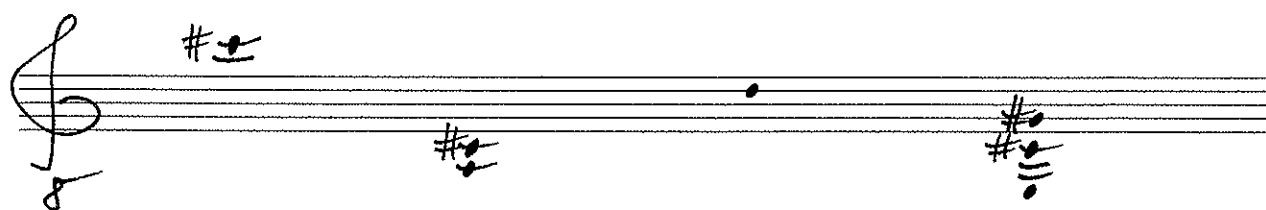
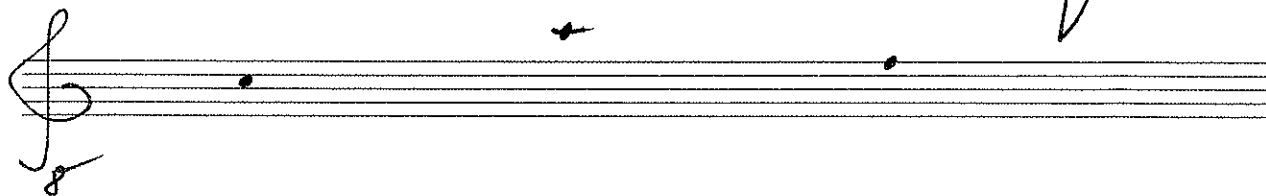
gitarre



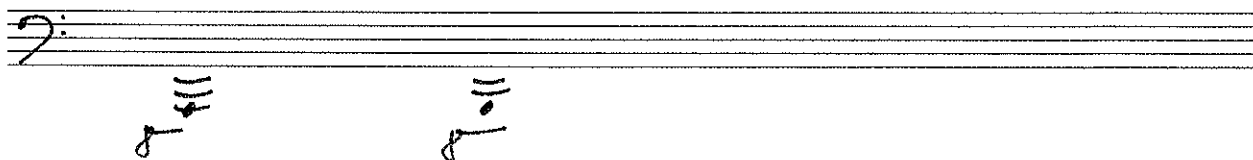
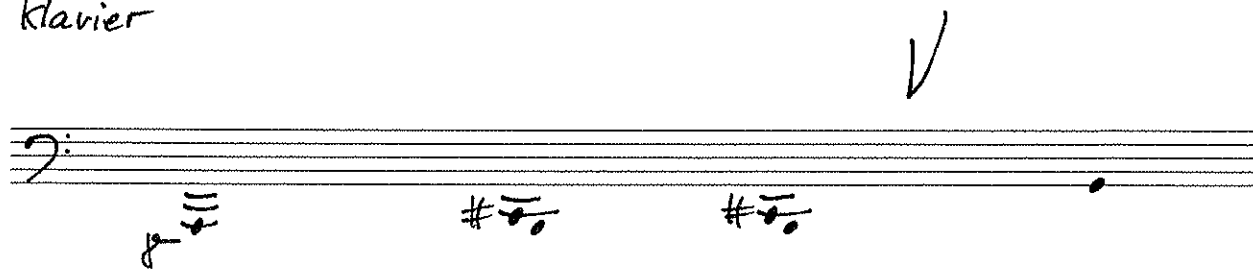
klavier



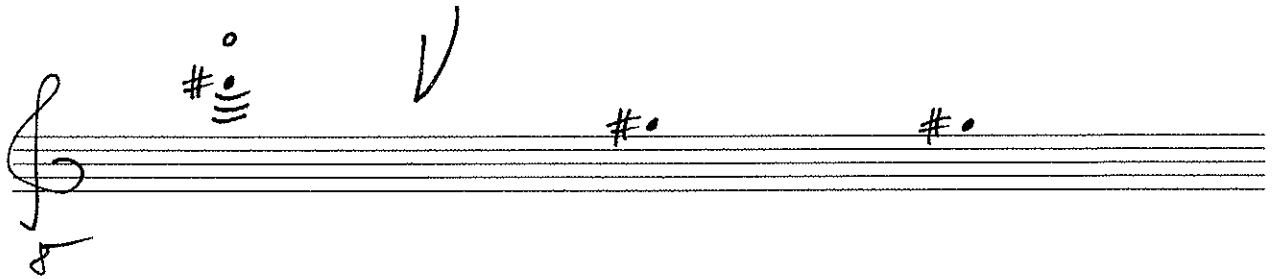
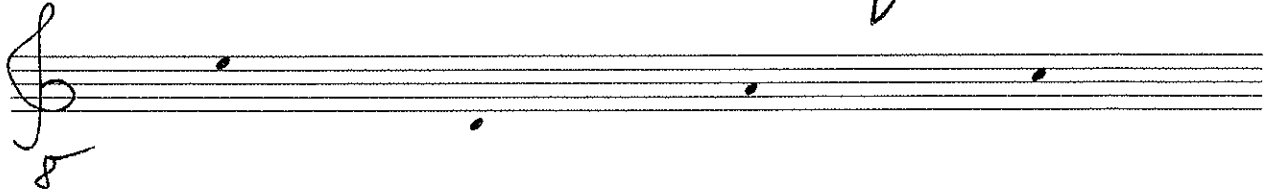
gitarre



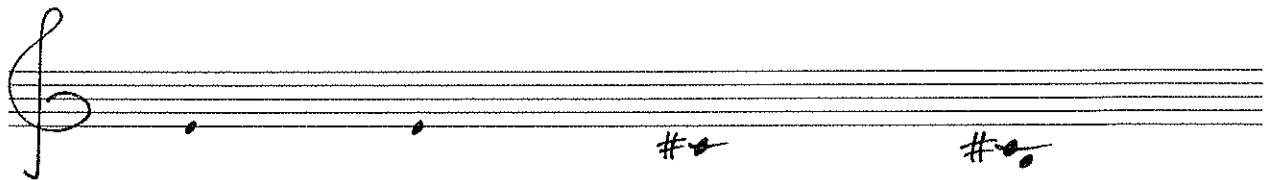
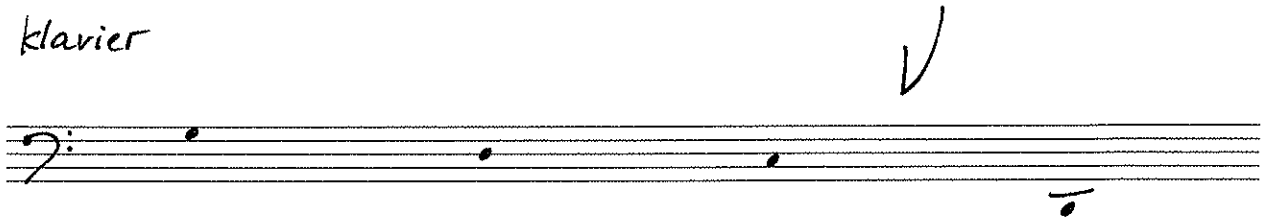
klavier



gitarre



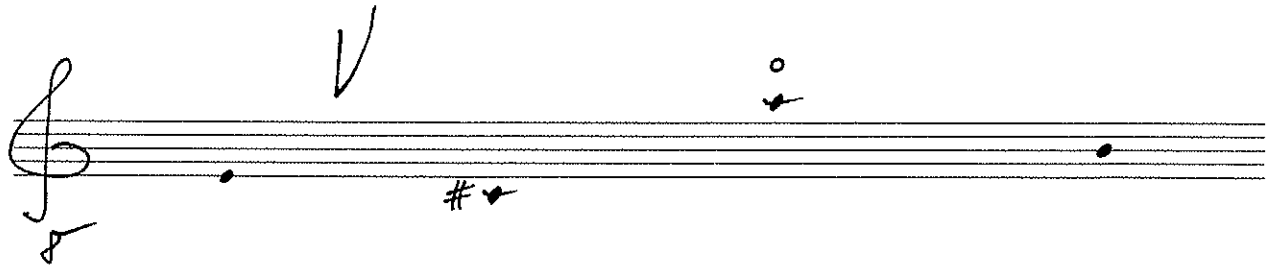
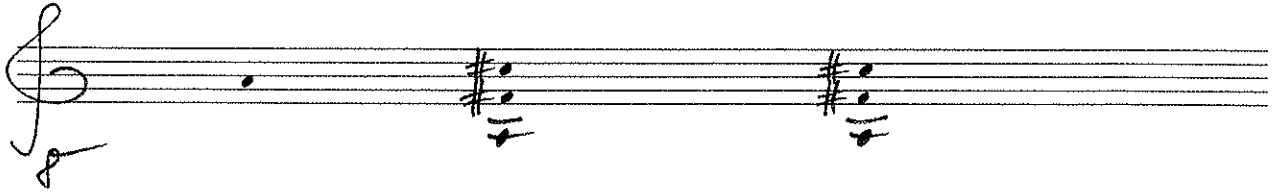
klavier



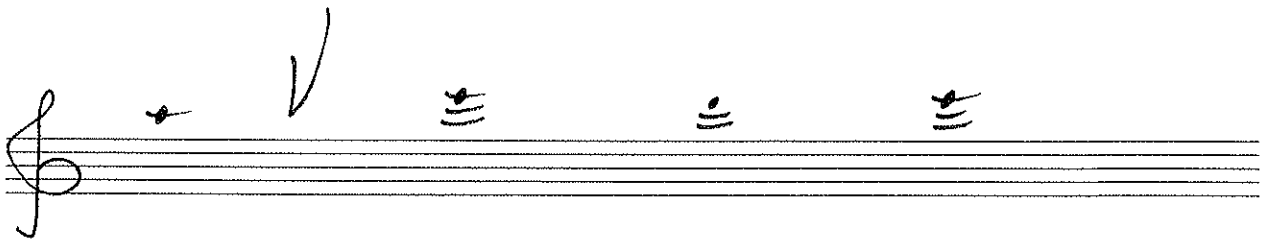
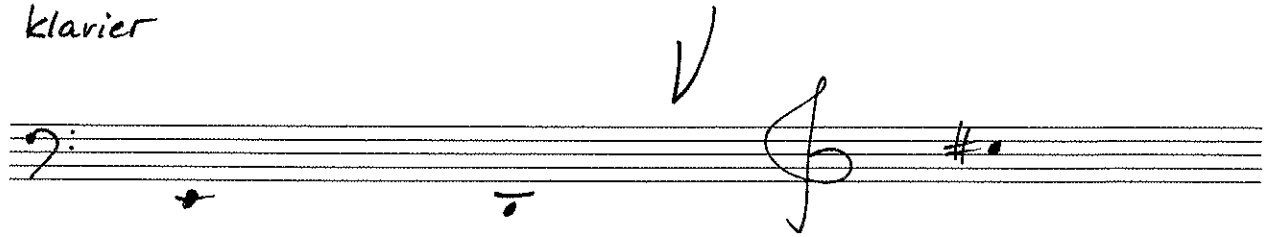
gitarre

clavier

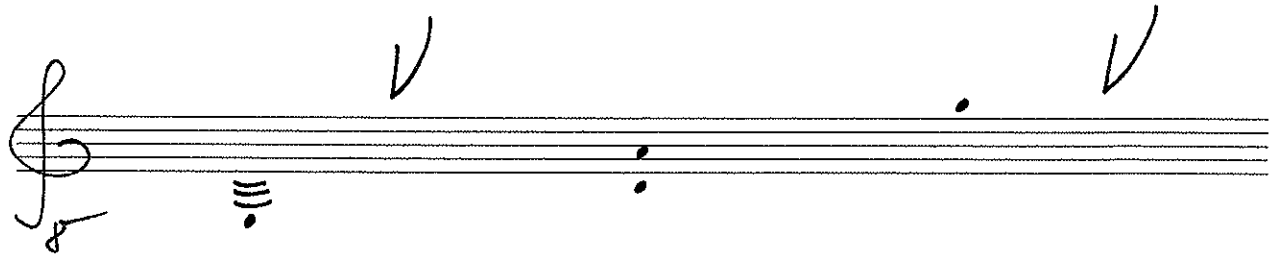
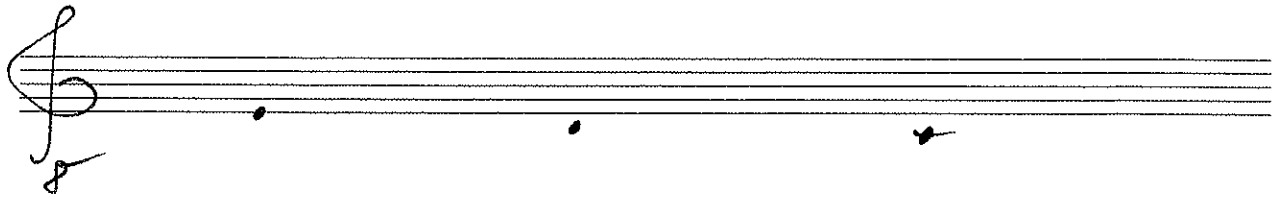
gitarre



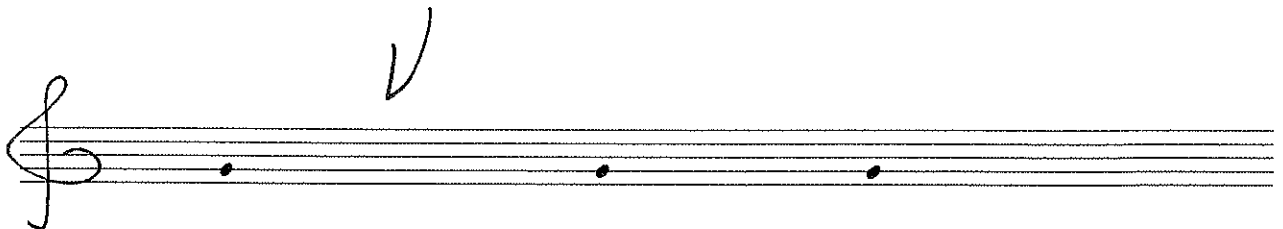
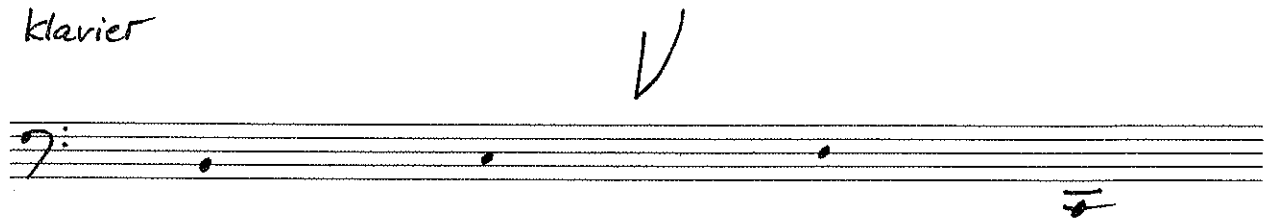
klavier



gitarre



klavier



gitarre

klavier